

Z-G500M-HM Solid Carbide / Hartmetall

Data Sheet - Tooling Alloys



Zapp is certified to ISO 9001

Zapp Alloy /
Zapp-Werkstoff

Z-G500M-HM

Typical Microstructure /
Typisches Gefüge-Schaubild

Typical Chemical Composition (Weight-%) /
Typische chemische Zusammensetzung (Gew.-%)

Element / Bestandteil	Weight % / Gewichtsanteil in %
WC	Essential part / Hauptbestandteil
Co	18.0

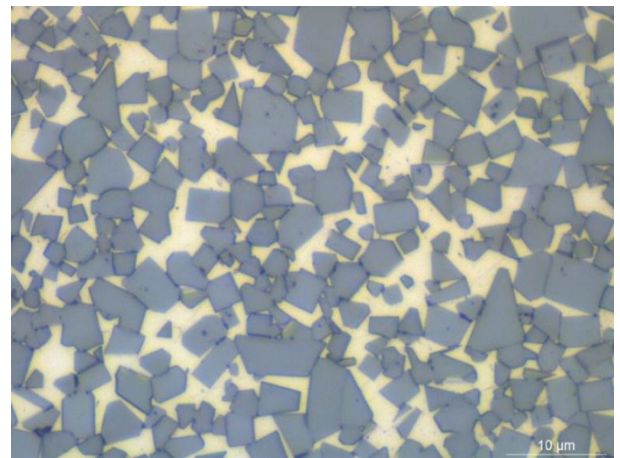
Grade Classification /
Sortenklassifizierung

Grade / Sorte	Z-G500M-HM
Typical name / typ. Bezeichnung	G50
Grain size classification / Klassifikation Korngröße	medium medium
Porosity / Porosität, ISO 4505	A02, B00, C00
Density / Dichte (g/cm ³), ISO 3369	13.60
Hardness / Härte	
HV 10	920.0
HRA	85.0

Grade description / Sortenbeschreibung	Cold forming dies, Tough grade Matrizen zur Kaltumformung, zähe Sorte
Product form / Produktform	Cold heading die blank Kaltstauchrohling

TOOLING ALLOYS

Zapp Precision Metals GmbH
Balcke-Dürr-Allee 1
40882 Ratingen
Phone +49 2307 79-566
Sales.TA@zapp.com
www.zapp.com



Typical values /
Typische Werte

Fracture toughness KIC (MPa·m ^{1/2}) Risszähigkeit	23.2
Transvers rupture strength (MPa), ISO 3327 Biegebruchfestigkeit	> 2,700.0

Further information regarding our products and locations are available in our image brochure and under www.zapp.com

The illustrations, drawings, dimensional and weight data and other information included in these data sheets are intended only for the purposes of describing our products and represent non-binding average values. They do not constitute quality data, nor can they be used as the basis for any guarantee of quality or durability. The applications presented serve only as illustrations and can be construed neither as quality data nor as a guarantee in relation to the suitability of the material. This cannot substitute for comprehensive consultation on the selection of our products and on their use in a specific application. The brochure is not subject to change control.

Last revision: November 2025